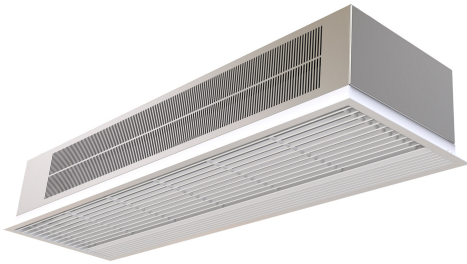


Karakteristike



- Savaeig? korpuso konstrukcija pagaminta iš cinkuoto plieno plokšt?s, paruoštas montuoti ? netikras lubas.
- It has both internal and external fixings. Electrical and electronic connections inside.
- ?leidimo grotel?s (nereikalauja prieži?ros), pagamintos iš aliuminio profili? ir išp?sto antgalio, integruotos ? vieno balto r?mo spalv? RAL 9016. Kitos spalvos yra prieinamos pagal pageidavim?.
- Anoduoto aliuminio išleidimo ment?s, orlaivio formos.
- Mažo triukšmo sukami kryžminio srauto ventiliatoriai, varomi 2 grei?i? išorinio rotoriaus varikliu.
- "P" type with water heated coil and integrated regulation for ON/OFF or three stages 0-10V proportional valve. „E“ tipo su ekranuotais elektriniais elementais, trij? stadij? su integruotu reguliavimu. „A“ tipo be šildymo, tik oras.
- Advanced Plug&Play control. Includes: Advanced PRO control with LCD display and integrated thermostat, door contact, 7m and remote control. With integrated functions: door delay (configurable); interface mode; operation, alarm and maintenance warning signals; and multiple digital inputs that modify the air curtain's operation.
- Includes protective varnish for the electronic board and control.
- Optional:
  - Auxiliary temperature sensors that improve air curtain control and increase energy savings.
  - Clever PRO intelligent control (automatic, programmable, ModBus via PLC, timer, etc.) with an additional temperature sensor.

Specifikacijos

50Hz

Negrejano		
Model	Nominalni protok vazduha (m³/h)	Preporu?ena Visina Instalacije (m)
RA 1000 A	1900	2,5-3,5
RA 1500 A	2800	2,5-3,5
RA 2000 A	3800	2,5-3,5

Elektri?no Grejanje			
Model	Nominalni protok vazduha (m³/h)	Elektri?ni Grejni Kapacitet 400Vx3 (kW)	Preporu?ena Visina Instalacije (m)
RA 1000 E	1800	3/6/9	2,5-3,5
RA 1500 E	2650	4/8/12	2,5-3,5
RA 2000 E	3600	6/12/18	2,5-3,5

Vodeno Grejanje				
Model	Nominalni protok vazduha (m³/h)	Kapacitet Grejanja Out. Ut. 80/60°C (kW)	Kapacitet Grejanja Out. Ut. 60/40°C (kW)	Preporu?ena Visina Instalacije (m)
RA 1000 P86	1750	9.28	-	2,5-3,5
RA 1500 P86	2400	13.65	-	2,5-3,5
RA 2000 P86	3500	19.26	-	2,5-3,5
RA 1000 P64	1600	-	6.99	2,5-3,5
RA 1500 P64	2200	-	10.16	2,5-3,5
RA 2000 P64	3200	-	14.31	2,5-3,5

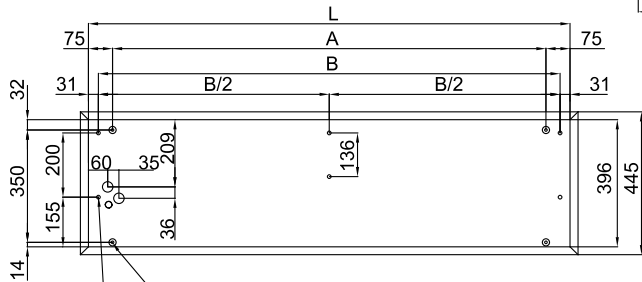
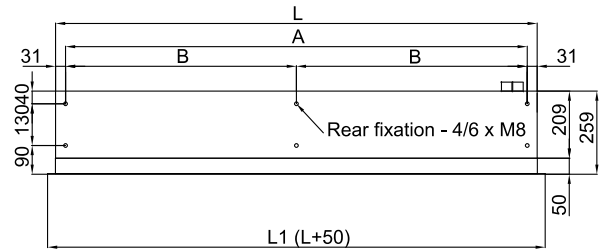
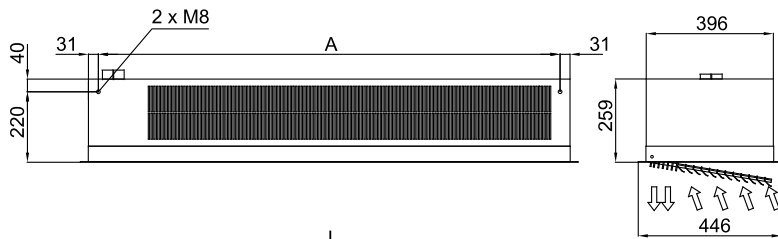
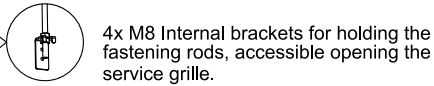
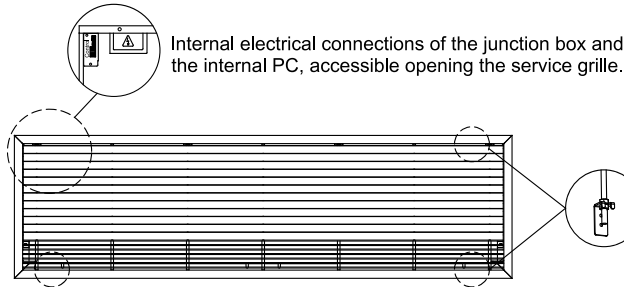
60Hz

Negrejano		
-----------	--	--



Model	Nominalni protok vazduha (m³/h)	Preporučena Visina Instalacije (m)
RA 1000 A 60Hz	1900	2,5-3,5
RA 1500 A 60Hz	2800	2,5-3,5
RA 2000 A 60Hz	3800	2,5-3,5

Dimenzije



Hanging fixation 1 (by default) - 4 x M8 Through-holes for routing the fasteners to the interior.  
 Hanging fixation 2 (optional) - 4/6 x M8 Holes for external fastening.

	L	L1	A	B	B/2
RA 1000 A, P, E	1000	1050	850	938	-
RA 1500 A, P, E	1500	1550	1350	1438	-
RA 2000 A, P, E	2000	2050	1850	1938	969